

# SUPPORT BOAT BRIEFING 2021



## INFORMATION FOR SUPPORT BOAT/ OFFICIAL BOAT DRIVERS

Welcome to the 2021 Takapuna Beach Cup (TBC), NZ's premier long distance outrigger canoe race. The main event is a change race over a distance of 42km. For those unfamiliar with Outrigger Canoe ultra marathon racing, a team is made up of either 9 men, 10 women or a mixed crew of 5 men and 5 women with any 6 of them continuously in the canoe. The support boat driver's role is to carry the 3 or 4 other paddlers that will continually take turns at rotating in and out of the canoe as they race over the 42km course.

If you have been allocated a team by the TBC organising committee, you should now have the contact details of your team. Please make contact with them prior to Friday 19<sup>th</sup> Feb to make arrangements for race day. If your support boat has been arranged by the TBC organising committee, payment will be made to you by us, not your crew. If you are designated as an official or safety boat you must be familiar with all of these instructions, in the event that you are called upon to support a team during the race.

Every boat must carry an observer (this person is not the driver and may not be a competing paddler, it may be the team captain). All support boats must meet the requirements set out below and all support boat skippers must sign a liability waiver and briefing acknowledgement register on race day. Both documents will be sent to you prior to race day.

If you need assistance at the ramp to launch and retrieve your boat on the day, please ask your crew to meet you at the ramp. There will also be some helpers in Hi Viz jackets at the ramp on the day. In an easterly wind the Takapuna ramp may be unworkable. The alternate ramp is Bayswater marina.

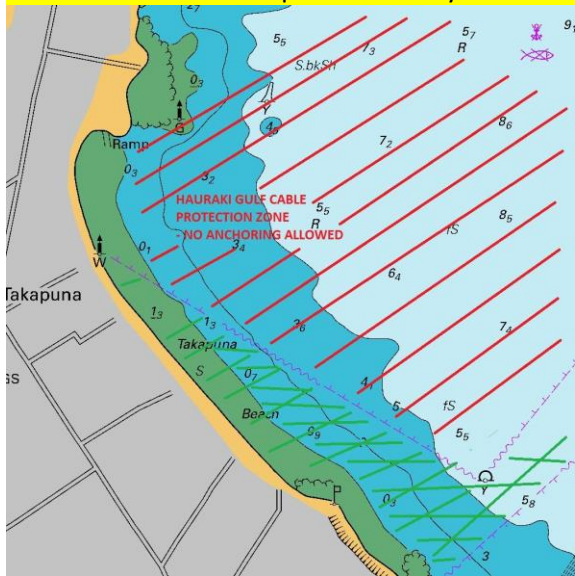
## SUMMARY

- **Effectively there is no anchoring off Takapuna Beach as it is a cable protection zone**
- **Support Boat Briefing: 6:30pm Friday 19th February – Takapuna Boat Club. Waivers need to be signed then unless returned via email earlier. No briefing on Saturday morning.**
- **Txt Glenn Whiting on 0275345244 on morning of race before 6.30am with boat name, crew name and crew racing number to confirm you are on site. Make sure you have contacted your team by Friday 19th to agree arrangements.**
- **Race start is 7.15am**
- **Support boats have minimal requirements that need to meet**
- **Support boats are to proceed to the first change over point at least 15 minutes before race start (Race start 7:15am) and wait on the South West side of the designated “change” buoy for your team**
- **Motor must be turned off when dropping off or picking up crew from the water**
- **No impeding waka or providing wake assistance**
- **No changing in shipping lanes with last changes on return near the light house before the shipping lane**
- **Radio channel is 77. Base mobile number for txts or calls is 027 548 4612 (load this number in your phone).**
- **This year there are four check in points during the race. Txt your Position #, Name of crew and Race Number to 027 548 4612.**
  - **Positions are #1 Islington Bay, #2 Midway across Rakino Chanel, #3 On the return when you reach the Top end of Motutapu and #4 Before you go past the lighthouse before crossing the shipping lane.**
  - **10minute penalty for every check in not made.**
- **Take extra care as Americas Cup water traffic will create additional potential hazards**

## DETAIL

### Boat Anchoring off Beach

Anchoring is only permitted at Takapuna Beach within a line from the cable triangle at the southern end of The Strand to yellow cable buoy off the south end of Takapuna Beach. Support boats cannot anchor inside the Cable Protection Area or risk prosecution by Maritime NZ.



Do not anchor outside the permitted area or you risk prosecution by Maritime NZ who monitor that stretch of water by camera. **Note; this is a change to anchoring arrangements in previous years.** In adverse weather conditions support boats may need to be loaded with crews at Castor Bay. This will be advised prior to the day.

Keep your cell phone handy for updates from the organisers and contact with your crew.

### Support Boat Briefing: 6:30pm Friday 19th February – Takapuna Boat Club

All Support Boat Drivers are asked to attend the Support Boat Drivers Briefing at the Takapuna Boat Club on Friday evening. There will be refreshments provided.

You will need to sign a waiver at the meeting (or have returned it via email prior)

You will have needed to read and understand the Support Boat Briefing information.

### Morning of the race

On Saturday 20th your boat must be in the Support Boat (Permitted Anchoring Zone mentioned above) by **6:30 am**. It is important to be on time, to allow your team to load up. Support boat skippers must CALL/TEXT GLENN To confirm they are onsite on the day. If you are texting to say you are onsite, you need to ensure you state your boat name and the crew **number /name** you are supporting.

### Race start for ALL crews in the 42km race is 7:15am

As soon as your crew is loaded with gear and support paddlers move immediately across the channel to the first changeover point. This is the second Orange Marker Buoy indicated on the race map

**Make sure you are not in the way of crews starting, you must be totally clear of the start area. The Race will start at 7:15am**

Any crews who have not started their race by 7:30am will be eliminated from the race.

Please read the requirements below and contact me, the Support Boat Manager, Glenn Whiting on 027-5345244 should you have any queries.

## **SUPPORT BOAT REQUIREMENTS**

### **Support Craft Criteria:**

The following criteria are in compliance with the rules set by the Takapuna Beach Cup organisers and must be followed.

- Tin or inflatable dinghies are not suitable support vessels
- Vessel must be a minimum of 5m in length
- Vessels must be seaworthy and have a minimum carrying capacity of 5 people and must be able to safely carry all team paddlers and support boat crewmembers.
- Vessels must be fully fueled and mechanically sound
- Vessels must be equipped with all safety gear, including personal flotation devices for ALL passengers (including all paddlers), a first aid kit, bailing equipment, flares, mirror, VHF Radio, boarding ladder and oars.
- All Operators must be aware of and comply with all applicable Water Safety Regulations and Requirements
- All Operators must be aware of and comply with all of the Events Official Race Rules.
- All Support Boats must have a competent operator
- All Support Boats must have a non-paddling observer
- All skippers to collect information Lanyard from boat briefing tent on beach and need to carry an alternate to VHF – eg mobile phone.

### **MARITIME NZ – Will conduct random safety inspection on support craft before the race.**

The appropriate race channel for communication is noted below and it is the responsibility of boat operators to monitor that channel throughout the race. Random Radio checks will be made at the beginning of the race.

**Please Note** The support boat driver has final say over the commandeering of his/her vessel.

## **Race Position Information check-in (NEW THIS YEAR)**

This year all Crew support boats will need to text in their position at Four (4) locations on the course.

1. Islington Bay
2. Midway across Rakino Chanel
3. On the return when you reach the Top end of Motutapu
4. Before you go past the lighthouse

**At each point the crew or skipper must text to race director on 0275484612**

- **Position #**
- **Name of crew**
- **Race Number**

**Failure to do so will result in a 10 minute Time Penalty.**

### **Racing**

Support boats are to proceed to the first change over point at least 15 minutes before race start (Race start 7:15am) and wait on the South West side of the designated "change" buoy

Further changes will be at the discretion of the teams (at approximate intervals of 10- 12 minutes).

All changeovers must be made from the water (i.e. No support boat within 20m of any canoe except during capsizes).

No Change overs may be made in the Shipping Chanel

Last change before must be made BEFORE the shipping channel heading back to Takapuna Beach.

Towing of a canoe in the direction of the finish line will result in disqualification of that team.

**Any impedance of a canoe by any means (eg. Wash or intentionally causing of canoe to alter course) will result in either a time penalty or disqualification being applied to the support boat's team at the discretion of the Race Director.**

Race Officials have the power to act and disqualify any crew whose actions, be it in their canoe or support craft, do not regard the safety of their own members or other competing crews

### **How to execute a safe and effective crew change:**

The crew manager will ask the support boat captain to do a crew change **NOTE:** no crew changes to be made in the main marked shipping channels.

Carefully move up alongside the canoe for the crew manager to call out the paddlers who will change.

Without creating unnecessary wash for any craft on the water, move ahead approximately 250m to a point directly on the path of the canoe heading (and clear of other paddlers and boats)

Drop the paddlers into the water and wait off to the side. The fresh paddlers will jump into the approaching canoe and replace the tired paddlers who jump into the water.

When it is safe to do so, approach the paddlers in the water keeping them in full view at all times. **Turn off the engine**, throw out the rope with float, drop the boarding ladder. Do not attempt to manoeuvre the boat until all of your paddlers are safely on board.

**Support Boats must TURN OFF THE ENGINE when paddlers are in the water !!!**

Canoes in the process of changing have right of way. If there are canoes and boats approaching during this stage of a change, they can and must steer around your boat.

When it is safe to do so, move off and shadow your canoe again (close enough for them to signal you if they need to) until the next change is requested.

## **Safety**

With so many boats, canoes and paddlers in the water, safety is paramount. Please observe all of these safety instructions throughout the race

- Safety of all passengers and paddlers entering and leaving your boat is your responsibility.
- Do not hand over the controls of your boat to any member of the racing crew, or anyone who is unqualified to handle your vessel and observe these safety standards, unless there is an emergency.
- Establish a procedure to confirm all paddlers are on board and safe before starting the engine after every change (e.g. have the observer call out, "all aboard-safe to start"). Follow this routine every time.
- Never reverse up to paddlers in the water.
- Switch motor off (not just into neutral) when paddlers are entering or leaving the boat.
- Approach paddlers in the water from the driver's side, so they remain in view.
- Have a rope with float attached on the end to throw to the paddlers, this helps them get on board easily and prevents you drifting away from them.
- **Call on VHF channel (Channel 77) for assistance from a safety boat or race control.** Backup is SHORE BASED RADIO OPERATOR TBC. Use the maritime emergency channel 16 only in the event of a real emergency. **As a back up to VHF to contact race control call the race director on 0275484612.**
- Include a thermal/foil blanket (cost ~\$10) in your first aid kit. If there is an injury or incident a paddler can quickly get cold.
- Support boats must not impede any other team, or assist their own by wash riding etc.
- Observe 5 knot speed rule around swimmers and boats (this includes racing canoes)
- Ensure safety is paramount for all on board, this includes not consuming any alcohol while involved with this event.

## **Weather**

If the weather on the day or the forecasted weather conditions look likely to make the course unsafe, there are alternate course's that can be used. If in doubt about conditions, contact the Race Director. Do not decide to cancel your support without contacting your crew and the race director Lara Collins 0275 484612 or myself on +64 27 5345244.

## **America's Cup**

The Prada Cup is scheduled to be racing at 4pm on 20<sup>th</sup> February. This is the reason why our racing must be concluded by 12noon. There will be increased Boat traffic on the harbour. Especially towards midday. Please be mindful of the increased boat traffic and the wash that these extra boats make. This may impact where you can make water changes. Should the Harbour Master, Coast Guard or Race Officials ask you to adjust your crews course, you must do as they say.

Alternately you may go to the Takapuna Beach Cup web site which will keep you up to date with what is happening [www.TakapunaBeachCup.com](http://www.TakapunaBeachCup.com)

**Thank you again for your support, this race is only possible because of your willingness to participate; I hope you enjoy the race.**

**Take care**

**Glenn Whiting - Support Boat Manager**